

8 DAYS TAIWAN ALISHAN

Taipei / Yilan / Jiayi / Nantou / Taichung



D1 Penang - Taoyuan

- Departure flight from Penang Int. Airport to Taiwan

D2 Taoyuan - Taichung - Jiayi (BLD)

- Chung She Flower Garden** - Four seasons Flower Sea Area (200,000 plants, more than 50 varieties of flowers bloom in turn)
- Chan Chau Ku Happy Moo Ranch** - A leisure farm built by the owner of the famous Qianqiao Valley Roastery
- Hinoki Village** - Taiwan's first forest-themed cultural and creative park
- Sleeping Forest** - A fairy tale picture book park created by an illustrator with a sleeping forest theme
- Alishan Forest Railway Garage Park** - stopping base for Alishan Forestry Railway trains and has a century-old history

D3 Jiayi - Nantou (BLD)

- Alishan National Forest Recreation Area** - Located at an altitude of more than 2,000 meters with cool climate (Train Experience + Shuttle Bus)
- Xianglin Giant Tree, Shuling Pagoda, Shouzheng Temple**

D4 Nantou - Taichung (B)

- Sun Moon Lake** - Enjoy the panoramic view of Sun Moon Lake by cable car
- Formosan Aboriginal Cultural Village** - A joyful and diverse theme park built with Aboriginal culture as the theme
- Wen Wu Temple** - A historical temple dedicated to gods of literature and war
- Aboriginal Culture Centre** - The history and culture of Shao indigenous tribe
- Feng Jia Night Market**

D5 Taichung - Yilan (BD)

- Jingtong Railway** - Experience sky lantern releasing (1 lantern for 4 people)
- Jiufen Old Street** - A historic street preserving Taiwan's traditional culture and offering unique local snacks
- Tangweigou Hot Springs Park** - Experience Hot Spring Fish SPA

D6 Yilan - Taipei (BL)

- Zhang Mei Ama's Farm** - Cappybara + Sika Deer Feeding Experience
- Jimmy Park** - The first "Jimmy Theme Plaza" in Taiwan
- Taipei 101 Shopping Centre** - A landmark of Taipei, offering shopping and sightseeing opportunities
- Wufengpu Shopping District**
- Raohe Night Market**

D7 Taipei (BL)

- Tian Lu Centre**
- National Martyrs Shrine** - An independent building that pays tribute to the spirit of loyalty through the ages
- Pearl Boutique Exhibition Centre**
- Chiang Kai-Shek Memorial Hall** - National Memorial Building in Zhongzheng District, Taipei City, Republic of China
- Ximending** - ATaipei's fashionable shopping district with various shops and delicacies.

D8 Taipei - Penang (B)

- Transfer to airport for departure flight home

TOUR HIGHLIGHTS

- Alishan National Forest Recreation Area (Train Experience + Shuttle Bus)
- Zhang Mei Ama's Farm
- Hot Spring Fish Spa Experience
- 2 Night Consecutive Stay in Taipei

LOCAL DELICACY

- 2 Buffet Special Cuisine



Exclude Tour Leader Tipping

PHOTOS ARE ILLUSTRATIVE PURPOSES ONLY



8天

台湾阿里山

台北 / 宜兰 / 嘉义 / 南投 / 台中

D1 槟城 - 桃园

- 槟城国际机场出发飞往台湾

D2 桃园 - 台中 - 嘉义 (早午晚)

- 中社花海 - 四季花海區(種植有20萬株, 50多種品種花色輪流綻放)
- 千巧谷牛樂園牧场 - 由知名的千巧谷烘焙工坊老闆打造的休闲农场
- 桧艺森活村 - 台湾第一座以森林为主题的文创园区
- 沉睡森林主题公园 - 由插畫家以沉睡森林主题所打造的童话繪本公園
- 阿里山铁路车库园区 - 為阿里山林業鐵路列車的停靠基地, 百年歷史

D3 嘉义 - 南投 (早午晚)

- 阿里山国家森林公园 - 地处海拔2000公尺以上, 气候凉爽 (特别安排小火车体验+接驳车)
- 香林神木、树灵塔、受镇宫

D4 南投 - 台中 (早)

- 日月潭 - 乘搭缆车观看日月潭全景
- 九族文化村 - 以原住民文化為主題所打造的歡樂多元的主题樂園
- 文武庙 - 供奉武王、關公等武聖和文昌帝君等文聖
- 邵族文史馆 - 了解台湾原住民邵族的历史文化
- 逢甲夜市

D5 台中 - 宜兰 (早晚)

- 菁桐铁路 - 体验放天灯(4人1灯)
- 九份老街 - 历史悠久的街区, 保留着台湾传统文化和特色小吃
- 汤围沟温泉街 - 体验温泉鱼SPA

D6 宜兰 - 台北 (早午)

- 张美阿嬷农场 - 水豚君+梅花鹿喂食体验
- 几米公园 - 为全台第一座「几米主题广场」
- 台北101购物中心 - 台北的地标性建筑, 购物和观光的热门地点
- 五分埔成衣广场 - 位于新北市的时尚购物区, 以其丰富的成衣商店和时尚潮流而闻名
- 饶河夜市

D7 台北 (早午)

- 天禄艺术中心
- 忠烈祠 - 历代褒扬忠义精神独立建筑
- 珍珠精品展示中心
- 中正纪念堂 - 中华民国台北市中正区的国家纪念建筑
- 西门町 - 台北时尚购物区, 拥有各种店铺和美食

D8 台北 - 槟城 (早)

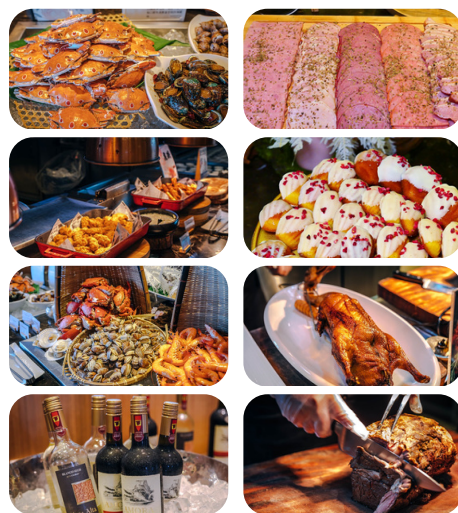
- 送往机场乘搭客机飞返家园

行程特点

- 阿里山国家森林公园 (小火车体验+接驳车)
- 张美阿嬷农场
- 温泉鱼SPA体验
- 台北连住2晚

美食风味餐

- 2个风味自助餐



不包含领队小费

显示的图片仅作参考之用